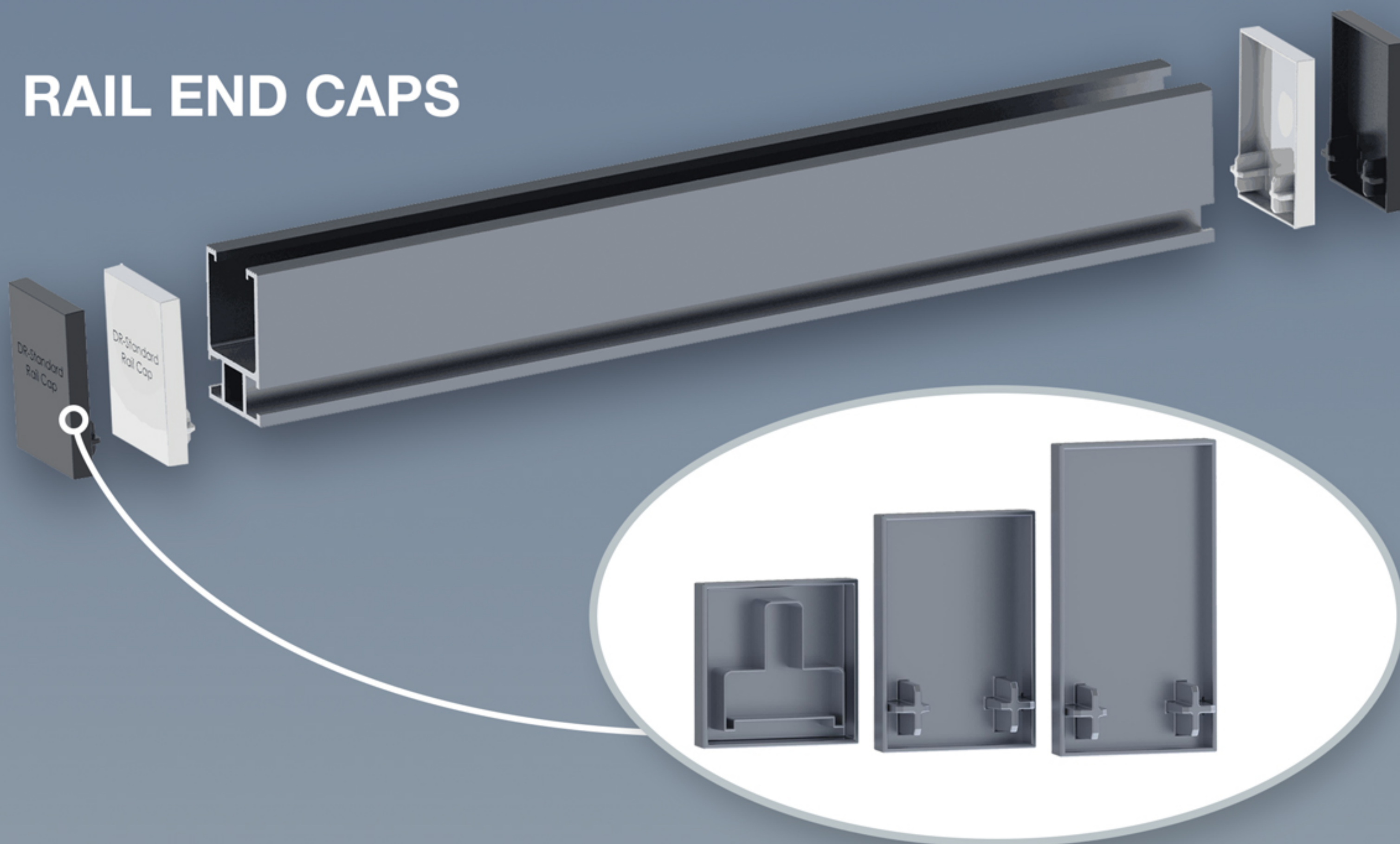


RAIL END CAPS



SECURE BRILLIANCE

Dual Rack proudly introduces Dual Rack Rail End Caps, completing our family of mounting solutions for Light, Standard, & Heavy Dual Rack Rails. Engineered for a polished finish, these caps seamlessly button up DR mounting systems, delivering not only aesthetic appeal but also robust protection. Safeguarding against the accumulation of water and debris inside the rail while providing edge protection, Dual Rack Rail End Caps add the final touch to your solar installation. Crafted from durable black or white PVC, these caps are backed by a 1-year warranty, ensuring both style and longevity for your Dual Rack solar mounting system.

ADVANTAGES AND HIGHLIGHTS

- Advanced Dual Rack Design
- Compatible with DR Mounting System
- Installation Simplicity
- Time and Cost Savings
- Efficient Design
- Versatile Installation
- User Friendly
- Multiple Options and Aesthetics
- 1-year Limited Warranty
- Conforms to UL STD 2703
- ETL Certified
- Class A Fire Rated



■ PRODUCT SELECTION AND ITEM CHART

Product Line	
Item #	Product Name
DR-CSEC-01	Standard Rail End-Cap - Clear
DR-CSEC-02	Lite Rail End-Cap- Clear
DR-CSEC-03	Heavy Duty Rail End-Cap - Clear
DR-BSEC-01	Standard Rail End Cap - Black
DR-BSEC-02	Lite Rail End-Cap - Black
DR-BSEC-03	Heavy Duty Rail End-Cap - Black



Rail Span (ft ¹)		Exposure B	Ultimate wind speed V (mph)	Rail Type	Max Span Length (In.) Roof Wind Pressure Zone 1 Roof Snow Load (psf)					
0	10				20	30	40	50	60	70
Roofs 0° to 7°	110	HD	145	133	122	111	97	88	80	75
		STD	116	107	94	81	71	64	59	54
		LTE	95	86	76	67	59	53	48	45
	115	HD	145	133	122	111	97	88	80	75
		STD	116	107	94	81	71	64	59	54
		LTE	95	86	76	67	59	53	48	45
	120	HD	145	133	122	111	97	88	80	75
		STD	116	107	94	81	71	64	59	54
		LTE	90	86	76	67	59	53	48	45
	130	HD	145	133	122	111	97	88	80	75
		STD	112	107	94	81	71	64	59	54
		LTE	85	85	76	67	59	53	48	45
	140	HD	142	133	122	111	97	88	80	75
		STD	104	104	94	81	71	64	59	54
		LTE	80	80	76	67	59	53	48	45
	150	HD	134	132	121	111	97	88	80	75
		STD	97	97	92	81	71	64	59	54
		LTE	77	77	76	67	59	53	48	45

Ordering Specifics	
Package	10pcs / pkg
Package Size	Standard

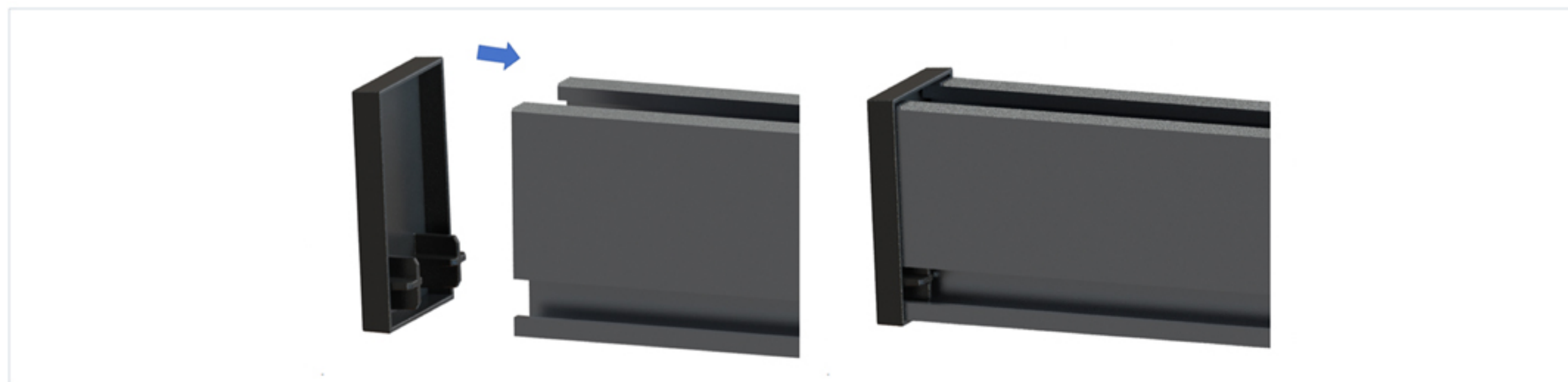
A. The table above ONLY includes Dual Rack rail capacity. It does not include roof attachment of roof capacity check.
 B. Structural risk category per ASCE/SEI 7-16. C. Wind exposure: B, C, D. Roof wind pressure region: Zone 1, Zone 2 & Zone 3.
 D. Maximum mean roof height is 45 ft. E. Seismic design category: A through E. F. Roof pitch is between 0 degree and 55 degree.
 G. Maximum solar panel weight is 50 lbs. H. Height of solar panel is between 2" and 10" to roof.
 *See Exposure C and D, zone 1 & 2 & 3 span table calculation details in Installation Manual/P.E. certification.

■ INSTALLATION GUIDE

*For detailed instructions please refer to the Dual Rack installation guide

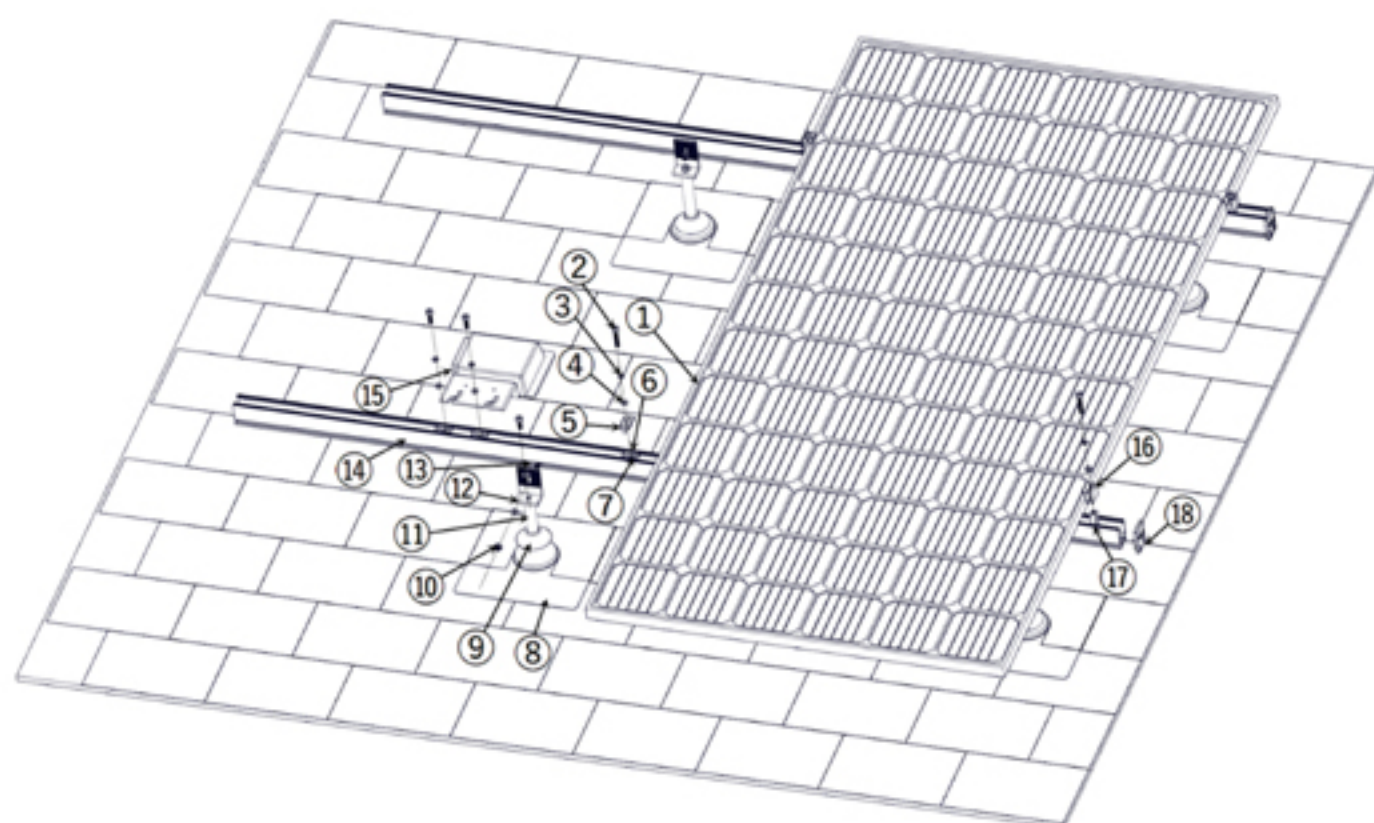
Dual Rack Rail End Caps, designed for Light, Standard, & Heavy Dual Rack Rails, perfect the aesthetic and protective aspects of your solar mounting system. These caps provide a sleek finish, preventing water and debris accumulation inside the rail and offering edge protection. Available in black or white PVC, they not only enhance the appearance but also ensure durability. Elevate your Dual Rack system with these End Caps, backed by a 1-year warranty.

RAIL END CAPS (HD/STD/LTE)



1. Install Caps:
Align the bottom teeth of the End Cap with the opening rail grooves.

2. Tighten Caps:
Apply pressure to create a snug fit between the End Cap and the mounting rail.



- ① Solar Panel
- ② Dual Hex Bolt
- ③ Lock Washer
- ④ Flat Washer
- ⑤ Mid Clamp Top
- ⑥ Channel Strut Base
- ⑦ Channel Strut Floater
- ⑧ Dual Jack Flashing
- ⑨ EPDM Washer
- ⑩ Flange Nut
- ⑪ Dual Jack
- ⑫ L-Foot
- ⑬ T-Bolt
- ⑭ Standard Rail
- ⑮ Inverter
- ⑯ Universal End Clamp Top
- ⑰ Universal End Clamp Base
- ⑱ Standard Rail End-Cap

* End Clamp, Mid Clamp and Channel Strut are pre-assembled and can be detached as top, base and other accessories such as washer and floater showing in the installation guide.

Contact Info		
	Dual Rack Inc. 2290 Agate ct. Unit A-B, Simi Valley, CA, 93065 www.DualRack.net	
Email: info@DualRack.net Phone: +1 (805) 254 - 2250		